

1

2

3

4

A

A

B

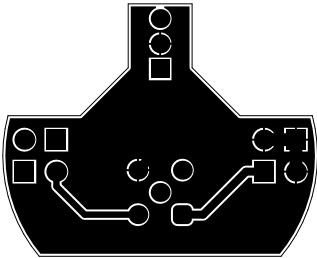
B

C

C

D

D



Kronotech Srl Via Adriatica 284 33030 – Campoformido (UD) Italy		
TITLE: TITLE Top Layer		
SIZE: A4	DWG NO: TITLE	REV: 0
SCALE: 1:1	DO NOT SCALE DRAWING	DATE: 15/05/2024

1

2

3

4

1

2

3

4

A

A

B

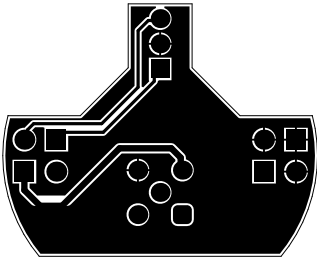
B

C

C

D

D



Kronotech Srl Via Adriatica 284 33030 – Campoformido (UD) Italy		
TITLE: TITLE Bottom Layer		
SIZE: A4	DWG NO: TITLE	REV: 0
SCALE: 1:1	DO NOT SCALE DRAWING	DATE: 15/05/2024

1

2

3

4

1

2

3

4

A

A

B

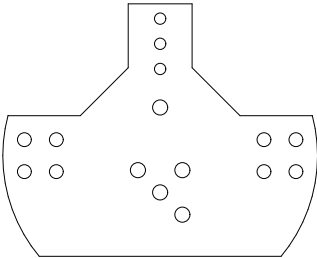
B

C

C

D

D



Kronotech Srl
Via Adriatica 284
33030 – Campoformido (UD) Italy

TITLE:
TITLE

SIZE:
A4

DWG NO:
TITLE

REV:
0

SCALE:
1:1

DO NOT SCALE DRAWING

DATE:
15/05/2024

1

2

3

4

1

2

3

4

A

A

B

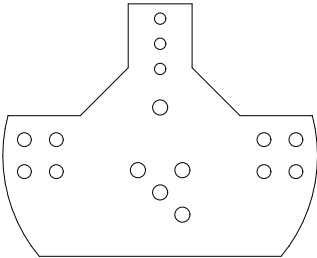
B

C

C

D

D



Kronotech Srl
Via Adriatica 284
33030 – Campoformido (UD) Italy

TITLE:
TITLE

SIZE:
A4

DWG NO:
TITLE

REV:
0

SCALE:
1:1

DO NOT SCALE DRAWING

DATE:
15/05/2024

1

2

3

4

1

2

3

4

A

A

B

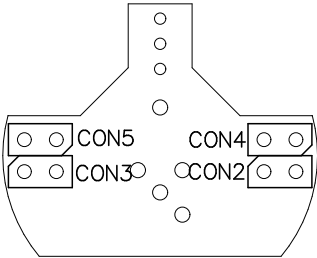
B

C

C

D

D



Kronotech Srl Via Adriatica 284 33030 – Campoformido (UD) Italy		
TITLE: TITLE Top Assembly		
SIZE: A4	DWG NO: TITLE	REV: 0
SCALE: 1:1	DO NOT SCALE DRAWING	DATE: 15/05/2024

1

2

3

4

1

2

3

4

A

A

B

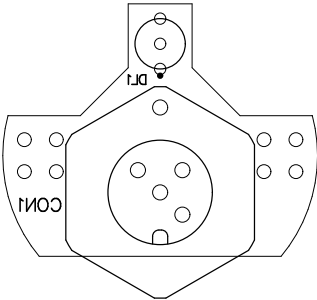
B

C

C

D

D



Kronotech Srl Via Adriatica 284 33030 – Campoformido (UD) Italy		
TITLE: TITLE Bottom Assembly		
SIZE: A4	DWG NO: TITLE	REV: 0
SCALE: 1:1	DO NOT SCALE DRAWING	DATE: 15/05/2024

1

2

3

4

1

2

3

4

A

A

B

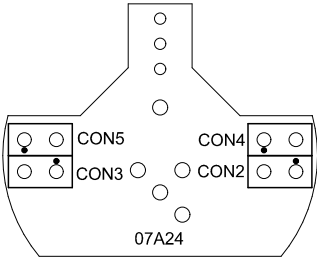
B

C

C

D

D



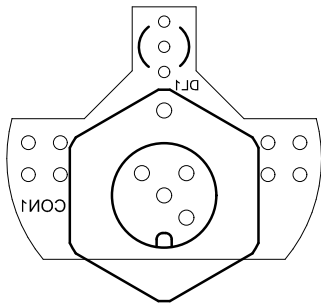
Kronotech Srl Via Adriatica 284 33030 – Campoformido (UD) Italy		
TITLE: TITLE Top Overlay		
SIZE: A4	DWG NO: TITLE	REV: 0
SCALE: 1:1	DO NOT SCALE DRAWING	DATE: 15/05/2024

1

2

3

4



Kronotech Srl Via Adriatica 284 33030 – Campoformido (UD) Italy		
TITLE: TITLE Bottom Overlay		
SIZE: A4	DWG NO: TITLE	REV: 0
SCALE: 1:1	DO NOT SCALE DRAWING	DATE: 15/05/2024

1

2

3

4

A

A

B

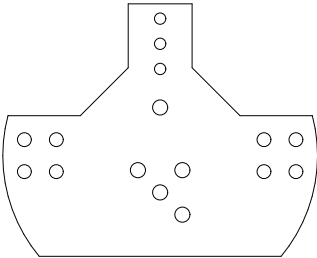
B

C

C

D

D



Kronotech Srl Via Adriatica 284 33030 – Campoformido (UD) Italy		
TITLE: TITLE Top Paste		
SIZE: A4	DWG NO: TITLE	REV: 0
SCALE: 1:1	DO NOT SCALE DRAWING	DATE: 15/05/2024

1

2

3

4

1

2

3

4

A

A

B

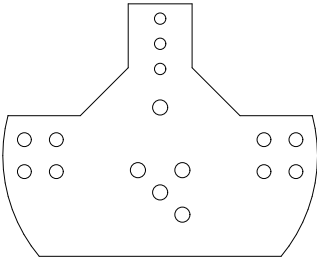
B

C

C

D

D



Kronotech Srl
Via Adriatica 284
33030 – Campoformido (UD) Italy

TITLE:
TITLE **Bottom Paste**

SIZE:
A4

DWG NO:
TITLE

REV:
0

SCALE:
1:1

DO NOT SCALE DRAWING

DATE:
15/05/2024

1

2

3

4

1

2

3

4

A

A

B

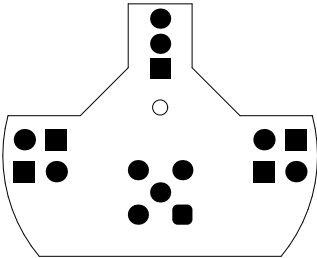
B

C

C

D

D



Kronotech Srl Via Adriatica 284 33030 – Campoformido (UD) Italy		
TITLE: TITLE Top Solder		
SIZE: A4	DWG NO: TITLE	REV: 0
SCALE: 1:1	DO NOT SCALE DRAWING	DATE: 15/05/2024

1

2

3

4

1

2

3

4

A

A

B

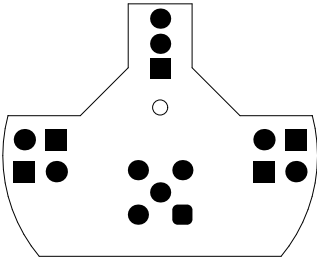
B

C

C

D

D



Kronotech Srl Via Adriatica 284 33030 – Campoformido (UD) Italy		
TITLE: TITLE Bottom Solder		
SIZE: A4	DWG NO: TITLE	REV: 0
SCALE: 1:1	DO NOT SCALE DRAWING	DATE: 15/05/2024

1

2

3

4

1

2

3

4

A

A

B

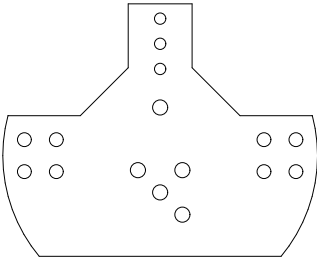
B

C

C

D

D



Kronotech Srl Via Adriatica 284 33030 – Campoformido (UD) Italy		
TITLE: TITLE Board Outline		
SIZE: A4	DWG NO: TITLE	REV: 0
SCALE: 1:1	DO NOT SCALE DRAWING	DATE: 15/05/2024

1

2

3

4

1

2

3

4

A

A

B

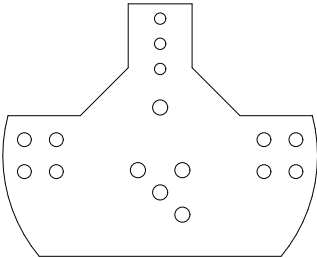
B

C

C

D

D



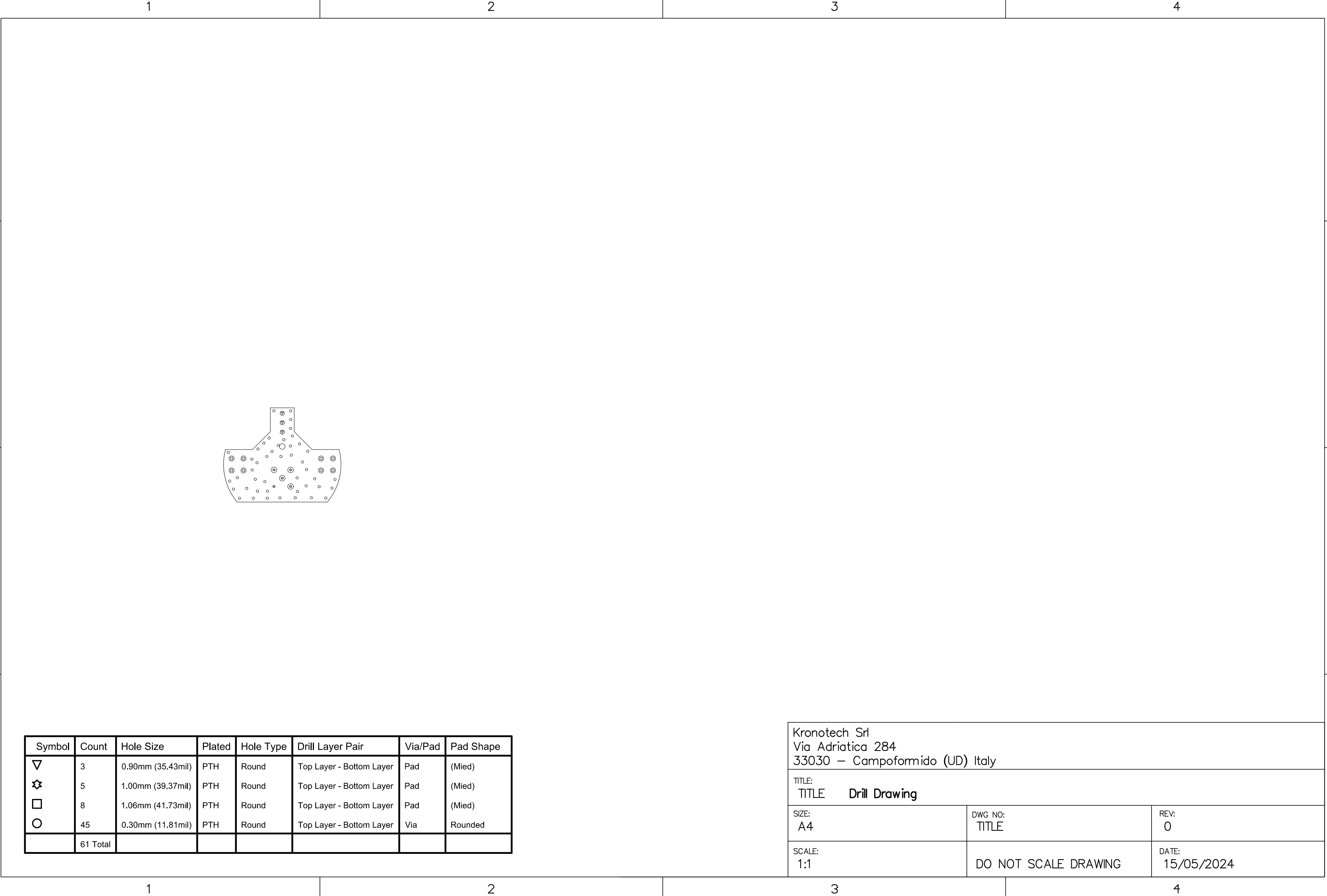
Kronotech Srl Via Adriatica 284 33030 – Campoformido (UD) Italy		
TITLE: TITLE Dimensions		
SIZE: A4	DWG NO: TITLE	REV: 0
SCALE: 1:1	DO NOT SCALE DRAWING	DATE: 15/05/2024

1

2

3

4



Symbol	Count	Hole Size	Plated	Hole Type	Drill Layer Pair	Via/Pad	Pad Shape
▽	3	0.90mm (35.43mil)	PTH	Round	Top Layer - Bottom Layer	Pad	(Mied)
✱	5	1.00mm (39.37mil)	PTH	Round	Top Layer - Bottom Layer	Pad	(Mied)
□	8	1.06mm (41.73mil)	PTH	Round	Top Layer - Bottom Layer	Pad	(Mied)
○	45	0.30mm (11.81mil)	PTH	Round	Top Layer - Bottom Layer	Via	Rounded
	61 Total						

Kronotech Srl
Via Adriatica 284
33030 – Campoformido (UD) Italy

TITLE:
TITLE Drill Drawing

SIZE:
A4

DWG NO:
TITLE

REV:
0

SCALE:
1:1

DO NOT SCALE DRAWING

DATE:
15/05/2024

A

B

C

D

A

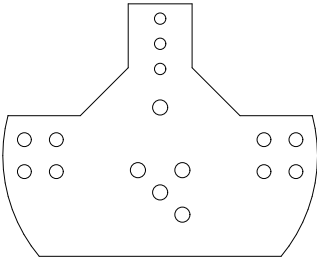
B

C

D

Gerber Files:
*.GTO - Top Overlay
*.GTP - Top Paste
*.GTS - Top Solder
*.GTL - L1 (Signal Layer)
*.G1 - L2 (Signal Layer)
*.G2 - L3 (Signal Layer)
*.GBL - L4 (Signal Layer)
*.GBS - Bottom Solder
*.GBP - Bottom Paste
*.GB0 - Bottom Overlay
*.GM1 - Board Outline
*.GM5 - Top Assembly
*.GM6 - Bottom Assembly
*.GD1 - Drill Drawing

Drill Files:
*.TXT - NC Drill
*.DRR - NC Drill Report



Board Info
Minimum Track: 150um
Minimum Gap: 150um

1. FINISHED PANEL THICKNESS TO BE 1.60mm
2. BOARD MATERIAL: ITEQ IT-158
3. BOARD FINISH: HAL Lead Free
4. SOLDER RESIST: APPLY TO BOTH SIDES COLOUR - Green
5. COMPONENT IDENT: COLOUR TO BE WHITE
6. TOLERANCES: BOARD THICKNESS: +/- 10%

Layer	Name	Material	Thickness	Constant	Board Layer Stack
	Top Overlay				[Hatched]
	Top Solder	SM-001	0.025mm	4	
1	Top Layer	CF-004	0.035mm		[Hatched]
	Dielectric3	Core-043	1.499mm	4.3	
2	Bottom Layer	CF-004	0.035mm		[Hatched]
	Bottom Solder	SM-001	0.025mm	4	
	Bottom Overlay				[Hatched]

Total board thickness: 1.619mm

Kronotech Srl Via Adriatica 284 33030 – Campofornido (UD) Italy		
TITLE: TITLE Fab Notes		
SIZE: A4	DWG NO: TITLE	REV: 0
SCALE: 1:1	DO NOT SCALE DRAWING	DATE: 15/05/2024